



## Clouds by FEINGOLD

### PDF Guide

Fair weather clouds on transparent background for drag & drop on your photos.

Learn more at [www.sky-builder.com](http://www.sky-builder.com)

## Quick use

1. Drag & drop the folder containing the clouds from the Layer Panel on to your destination document. If you need more information about how to drag & drop between documents, please take a look at the included **"drag and drop guide.pdf"**.
2. Use the **"Free Transform"** tool (**Edit > Free Transform**) on the "Clouds" folder to resize the clouds fit your photo. You can transform the cloud folder as often as you like, all clouds were created as Smart Objects, so there will be no loss of quality.
3. You can now explore the layers and rearrange the clouds as required.

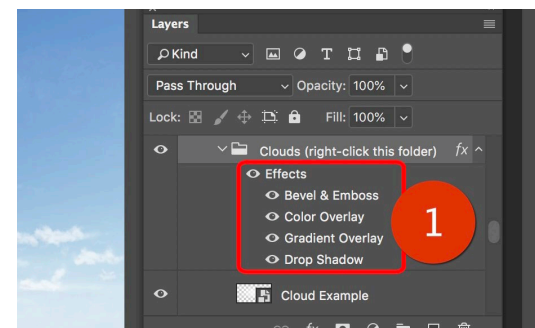
## Change the color of a cloudscape

Please note that not every prepared Layer Style will produce good results combined with every cloud and any sky. You should see the prepared Layer Styles as a suggestion which will help you get started and which will need to be adjusted in most cases.

The individual parts of a cloudscape are usually collected inside folders listed in the **Layer Panel** in Photoshop. The easiest way to color all clouds at once is by adding a **Layer Style / Layer Effect (1)** like a **Gradient Overlay** or a **Color Overlay** to the folder containing all the clouds.

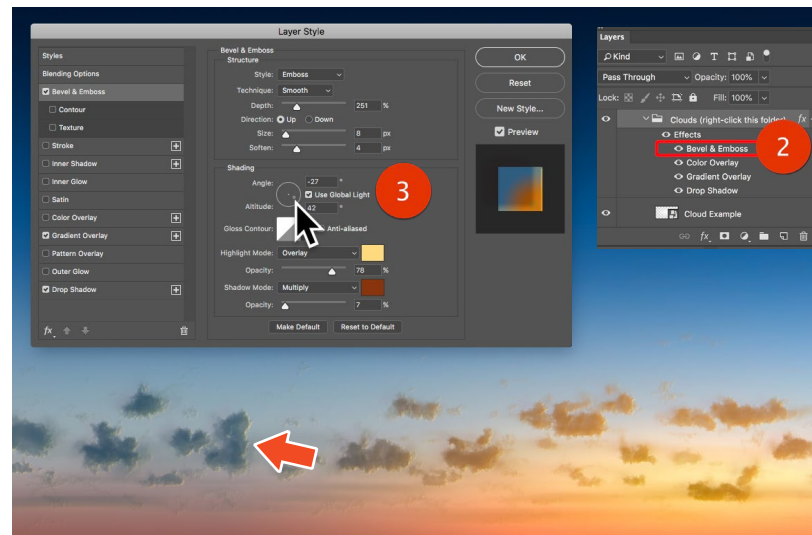
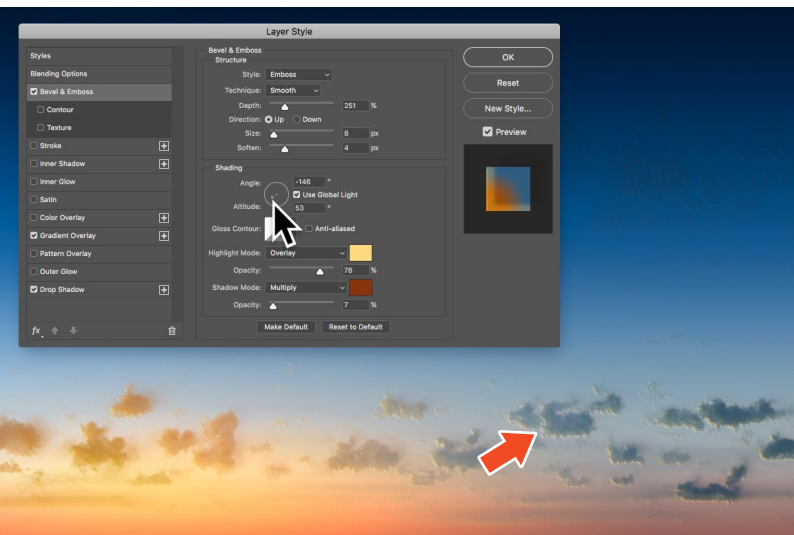
You can find many prepared color adjustments for clouds inside the included **clouds-color\_layer-styles\_v\*.psd** file. If you use the Sky Gradients (from [www.sky-builder.com](http://www.sky-builder.com)) you can experiment with the prepared layer styles you will find inside each sky document already applied to the **"Components (Drag & Drop) > Clouds"** folder. Play with the prepared settings to gain control step by step.

You can copy a **Layer Style** you like to try from the **clouds-color\_layer-styles\_v\*.psd** file to your clouds folder using **right click > Copy Layer Style**. To edit the prepared **Layer Styles (1)** change its **Bevel & Emboss**, **Color Overlay**, **Gradient Overlay** and **Drop Shadow** settings.



# Change the light direction for the entire cloudscape

The direction of a light edge added to the clouds using **Bevel & Emboss (2)** can be globally changed for all clouds by changing the Layer Style's **Bevel & Emboss > Shading > Angle (3)** settings.



## These clouds were created to work best with our sky gradients



50+ photorealistic and customizable skies for image editing - perfect to replace any sky. Skies are rarely perfect in photos and are therefore often replaced. This collection will enable you to pick or create just the perfect sky for any occasion in photographic quality.

Available for download at:  
[www.sky-builder.com](http://www.sky-builder.com)

If you have any **questions** just drop me a message, I am always happy to help.  
[Contact](#)



**Follow** FEINGOLD Design Agency  
[@Facebook](#) | [@Twitter](#) | [@Instagram](#)  
[@Pinterest](#) | [@Behance](#) | [@Vimeo](#)